

Artists Need Live/Work Space

- Developers contacted ArtSpace as a resource how to convert industrial buildings for artist live/work spaces. What is the demand? How much rent can they pay? What do artists need?
- Fiber Artist needs more space to expand.
- Query from PA artists researching for places to relocate to with a strong arts community. Also want information on the artist ownership project - what is the process - do you need good credit.

Where to find Work or Live/Work Space?

- [The Roy Group \(216\) 696-1402](#)
- [Loft Works \(216\) 496-7887](#)
- [Rose Management \(216\) 361-4541](#)
- [SHORE Cultural Centre \(216\) 289-8578](#)
- FOR SALE in historic Fleet/East 65th - house with a huge 2nd floor and a great open 1st floor ideal for a gallery or work space. House, w/ extra lot, are located across from St. Stans. Price \$59,900. Contact Marylou Miller Progressive Urban Real Estate [\(216\) 410-0756](#)
- UNFINISHED WAREHOUSE SPACE for rent in Ohio City perfect for an artist - Ample Parking! Bathroom available. Crane available in the space for heavy lifting. For more info contact jayna@11river.com

ArtSpace-Cleveland Predictions in 2013

- Increased demand for live/work space
- Pop-up shops
- Young people wanting an urban experience
- More digital technology
- Scarcity of government funds for the arts
- More artists graduating from art schools

November 2012

Sponsors



FORESTCITY



[TAP Studios](#)

[SAMPSON-CARNEGIE](#)

[WOOD TRADER](#)

[4webdesign](#)

[THE ROY GROUP](#)

HAMILTON BUILDING

ROSE MANAGEMENT CO.

STRAUSS ELECTRIC SUPPLY

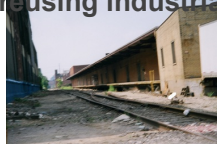
[MACS BACKS BOOKS](#)

[TASTEBUDS RESTAURANT](#)

[MORGAN PAPERMAKING CONSERVATORY](#)

[CONSOLIDATED GRAPHICS GROUP, INC.](#)

- Developer interest in preserving and reusing industrial buildings for artist housing
- More artists will relocate to Cleveland/Midwest from NYC, Chicago
- Artists will enter the ownership scene
- **Share your predictions with us for our last newsletter in 2012 at gouldloft@sbcglobal.net**



We are following



[Leveraging Investments in Creativity](#)
[Community Partnership for Arts & Culture](#)

[ASIAN TOWN CENTER](#)

[PARMA AREA FINE ARTS COUNCIL](#)

[KAMM'S CORNERS](#)

[CAMPUS DISTRICT](#)

[ZYGOTE PRESS](#)

[ASIA PLAZA](#)

[SLAVIC VILLAGE](#)

[LOFT WORKS](#)

